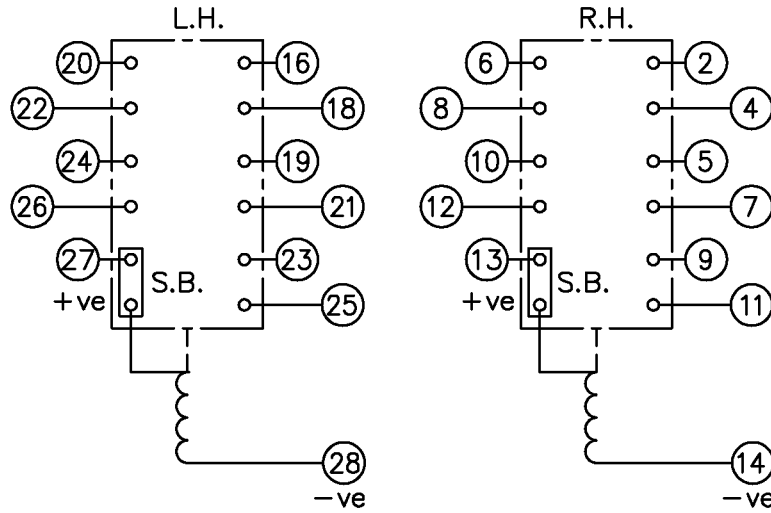


LOOKING ON FRONT OF RELAY



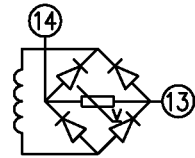
NOT SUBJECT TO UPDATE
ONCE COPIED / PRINTED
OR DOWNLOADED

KEY

- make contact
- break contact
- c/o contact
- ext. conn
- plug bridge
- shorting
- metering point
- 5Kv barrier
- test socket
- shorting
- plug & socket

CONTACT CONFIG.	OUTPUT CONTACT PAIR / TERMINAL No.						
	R.H. →	1-3	2-4	5-7	6-8	9-11	10-12
	L.H. →	15-17	16-18	19-21	20-22	23-25	24-26
5M 1SB		M	M	M	M	M	
4M 1B1SB		B	M	M	M	M	
3M 2B1SB		B	M	B	M	M	
2M 3B1SB		B	B	B	M	M	
1M 4B1SB		B	B	B	M	B	
5B1SB		B	B	B	B	B	

NOTE: WHEN RECTIFIER IS SPECIFIED COIL CONNS. ARE AS SHOWN.



FRAME REFERENCE: E4FS09.

FRAME TERMINAL BLOCK ASSY: -

ASSEMBLY INSTRUCTIONS: -

TYPICAL ASSEMBLY DRAWING 2995G10032.

AT INDICATED POSITIONS FIT AS FOLLOWS:

T - FIT TRIP ISOLATION CONTACT 2995B10053

S - FIT STANDARD CONTACT 2995B10054

SECURE CONTACTS USING FIXING SCREW 2109F99009.

POSITIONS SHOWN BLANK ARE UNUSED

2	T		1
4	T		3
6	T	T	5
8	T	T	7
10	T	T	9
12	T	T	11
14	S	S	13
16	T		15
18	T		17
20	T	T	19
22	T	T	21
24	T	T	23
26	T	T	25
28	S	S	27

VIEW FROM NUMBERED SIDE OF BLOCK

OUTER TERMINAL BLOCK ASSY: -

ASSEMBLY INSTRUCTIONS: -

TYPICAL ASSEMBLY DRAWING 2995G10029.

AT INDICATED POSITIONS FIT AS FOLLOWS:

S - FIT STANDARD CONTACT 2995B10051

HC - FIT 'HEAVY CURRENT' KIT 2995G10030

WHERE IS SHOWN FIT CT SHORTING

KIT 2995G10031

POSITIONS SHOWN BLANK ARE UNUSED.

ALL POSITIONS FIT SCREW 2106F12506.

2	S		1
4	S		3
6	S	S	5
8	S	S	7
10	S	S	9
12	S	S	11
14	S	S	13
16	S		15
18	S		17
20	S	S	19
22	S	S	21
24	S	S	23
26	S	S	25
28	S	S	27

VIEW FROM INSIDE FACE

Copyright © 2000 VA TECH Reyrolle Ltd. Hebburn

<p>Title: T.B. AND W.D. FOR AR212SB 6 CONTACT RELAYS IN EPSILON E4 CASE.</p>			<p>First used on:</p>		
<p>3 RDW 16/01/04 MN112/2606</p>			<p>Similar Articles:</p>		
<p>2 12/04/00 MN995/09</p>			<p>Supersedes:</p>		
<p>ISSUE DATE MOD.No.</p>			<p>Drq.No.</p>		
<p>VA TECH Reyrolle</p>			<p>Original Scale.</p>		
<p>AUTOMATION, CONTROL & PROTECTION</p>			<p>2112W50081</p>		
<p>DRAWN: A.LAW.</p>		<p>CHECKED:</p>		<p>APPROVED: R.D.WATSON</p>	
<p>DATE: 17/07/02</p>		<p>IE:</p>		<p>OPS:</p>	